



Diameter 22mm

ANESTHETIC TUBE MAKING MACHINE

Main Machine list

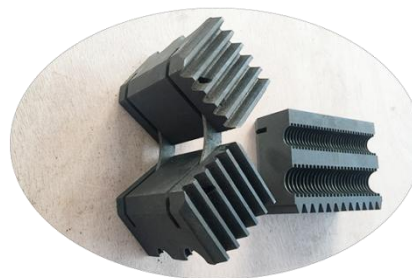
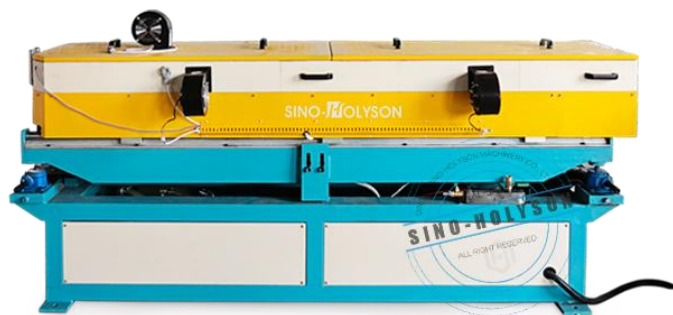
1. HSJ Series Single Screw Extruder(PP/HDPE)
2. Extrusion Mould + Die Head
3. Corrugated Forming Machine
4. Double Position Winder(With tension controller)

Please NOTE: Want to know more information for Corrugates Machine, please refer to our website, this is specially designed for Corrugates Industries introduction. www.extruder.tech

Suggestions A

Standard Chained Type

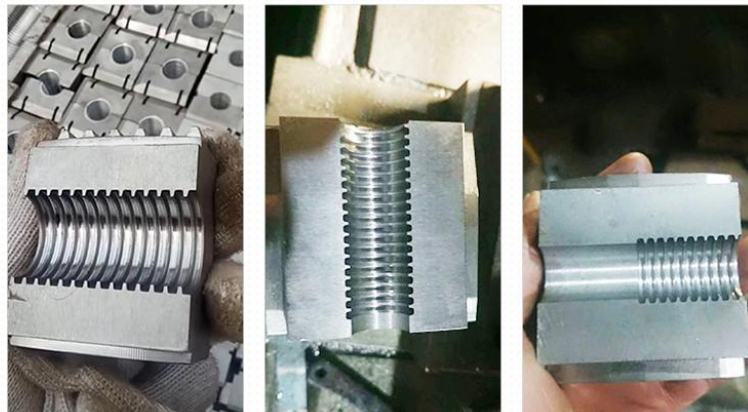
Extruder Model	HSJ-45mm	HSJ-65mm
Driving Motor	11kw	15kw
Production Capacity	15-30kg/h	25-45kg/h
Forming Mould	50 Pairs	72 Pairs
Production Speed	5-8m/min	8-12m/min



Suggestions B

Higher Speed Pushing Type

Extruder Model	HSJ-45mm	HSJ-65mm
Driving Motor	15kw	18.5kw
Production Capacity	25-45kg/h	35-65kg/h
Forming Mould	50 Pairs	72 Pairs
Production Speed	10-15m/min	18-25m/min



For this four machines, it will gives you different production speed. Of course, the machine price will varies some, according to the machine technical parameters.

Please choose which is the preferred model, according to your market need. Quotation will be given as requested.